

A shadow of a person is cast onto a wall with a cracked, textured surface. The shadow is dark and occupies the left side of the frame. The wall is light-colored and shows signs of wear and tear. The word "TRANSIT" is written in bold, black, sans-serif capital letters across the center of the image, overlapping the shadow and the wall texture.

**TRANSIT**



spring summer  
2024



Look 01 \_ JUMPER 11460 \_ TROUSERS B116



Look 02 \_ LEATHER JACKET R270\_ T-SHIRT 3380\_ TROUSERS C121









Look 06 \_JACKET H171\_ SHIRT V312\_ TROUSERS D130





Look 07  
JACKET 0241E  
T-SHIRT 8432  
TROUSERS REVERSIBLE J190



Look 08 \_ WAISTCOAT H172\_ T-SHIRT 5401\_ TROUSERS H170





Look 09 \_ LEATHER JACKET P250\_ SHIRT X330\_ TROUSERS B116



Look 10 \_ JUMPER 13481\_ TROUSERS B116





Look 11 \_ SHIRT V311\_ TROUSERS D131



Look 12 \_ JACKET D132\_ SHIRT U301\_ TROUSERS D131

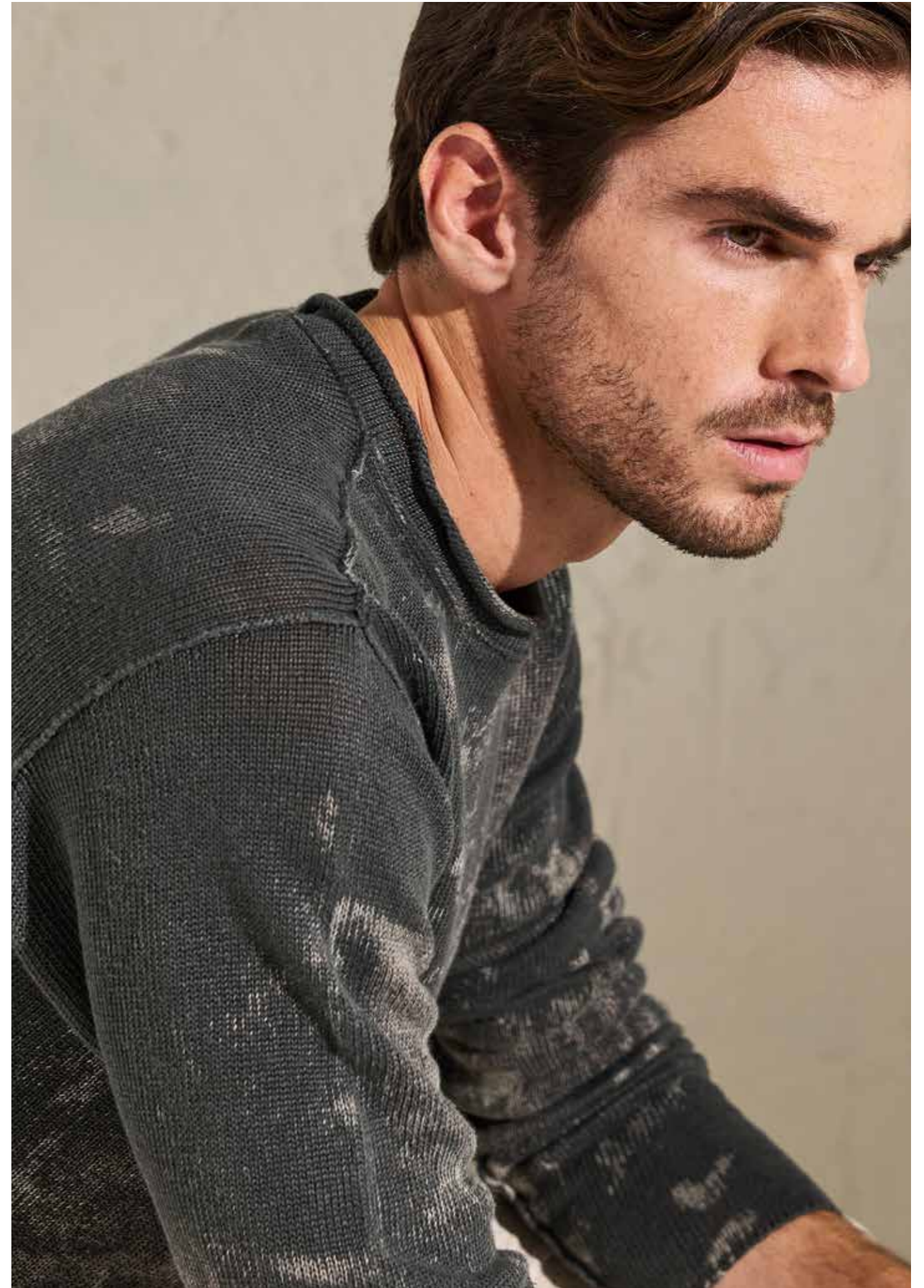


Look 13  
LEATHER JACKET Q260  
T-SHIRT 1361  
TROUSERS C120





Look 15\_ JUMPER 12470R\_ TROUSERS J191













Look 19  
JACKET B114  
T-SHIRT 1362  
TROUSERS B116



Look 20 \_ WAISTCOAT K202\_ SHIRT J193\_ TROUSERS K200



Look 21 \_ JACKET D134\_ T-SHIRT 8431\_ TROUSERS C122



Look 22 \_ LINEN JACKET I181\_ T-SHIRT 1364\_ TROUSERS B113



Look 23 \_ CARDIGAN 6411\_ T-SHIRT 1362\_ TROUSERS D131



Look 24 \_ JACKET G161\_ JUMPER 9442\_ TROUSERS G160



Look 25 \_ JUMPER 9442





Look 27 \_ JACKET J192\_ T-SHIRT 1362\_ TROUSERS REVERSIBLE J190



Look 28  
LEATHER WAISTCOAT P252  
T-SHIRT 4390



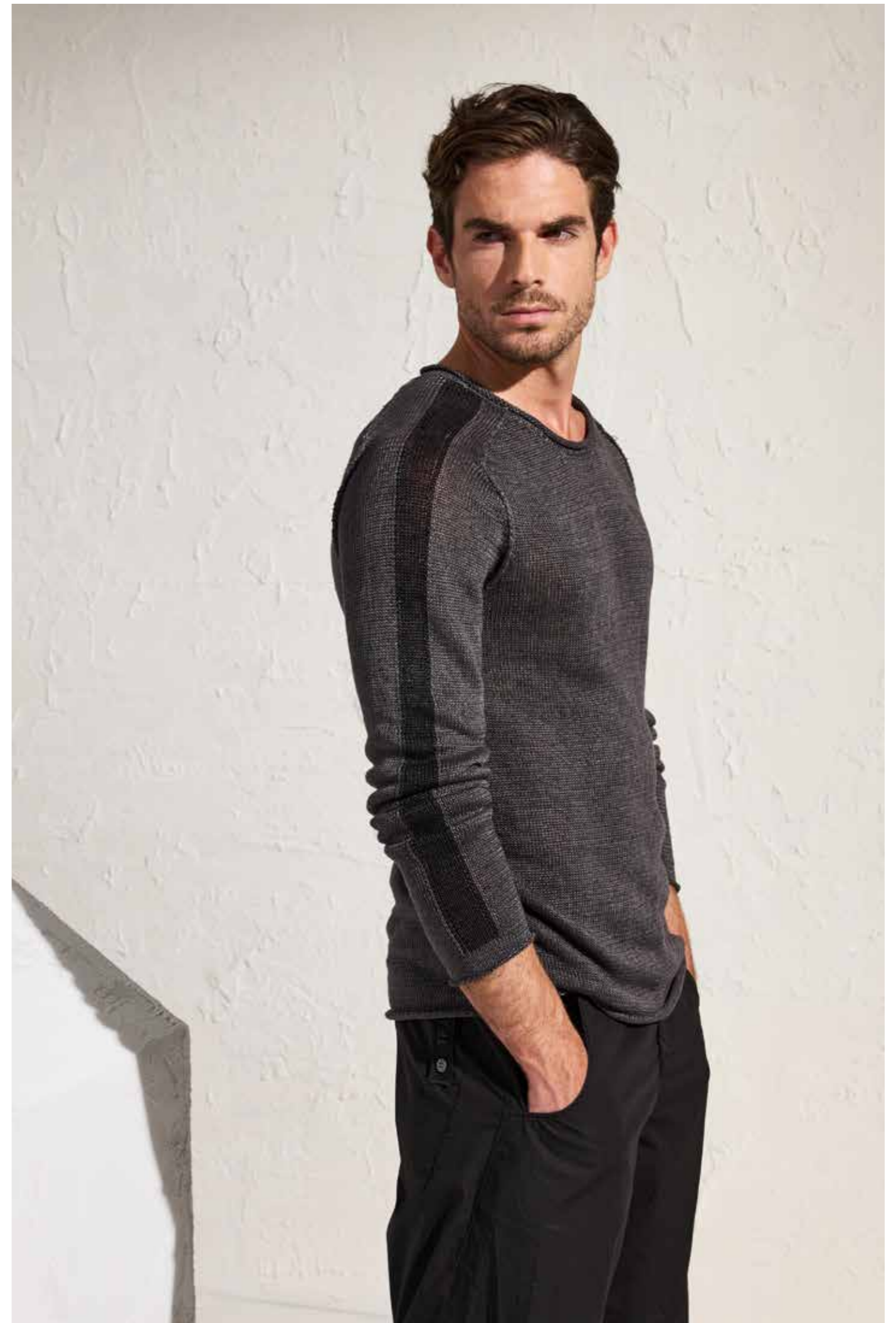




Look 30 \_ SHIRT W320\_ TROUSERS F150



Look 31 \_ JACKET O240\_ T-SHIRT 1360\_ TROUSERS F153



Look 32 \_ JUMPER 11461\_ TROUSERS B116





Look 34 \_ JACKET K201\_ T-SHIRT 1362\_ TROUSERS K200



Look 35 \_ JACKET 9441\_ T-SHIRT 4390\_ TROUSERS REVERSIBLE J190



Look 36 \_ JACKET O240E\_ T-SHIRT 8431\_ SHORTS H173





Look 38 \_ JACKET D135\_ T-SHIRT 1362\_ TROUSERS G160



Look 39 \_ JACKET 4392\_ SHIRT V310\_ TROUSERS A102



Look 40 \_ LEATHER JACKET Q261\_ T-SHIRT 5400\_ TROUSERS B110





Look 41 \_ LEATHER SHIRT P250\_ T-SHIRT 8431\_ TROUSERS C122



Look 42 \_ T-SHIRT 1361



Look 43\_PARKA M223E\_ JUMPER 9440\_ SHORTS D133





Look 44 \_JACKET M222\_ T-SHIRT 1362\_ TROUSERS F150



Look 45  
JACKET C123  
T-SHIRT 7420  
TROUSERS B113



**TRANSIT**

**GHOST**



Look 46 \_ PARKA O245EC\_ T-SHIRT 1366\_ TROUSERS B115EC





Look 47 \_ T-SHIRT 1366EC\_ TROUSERS B115EC





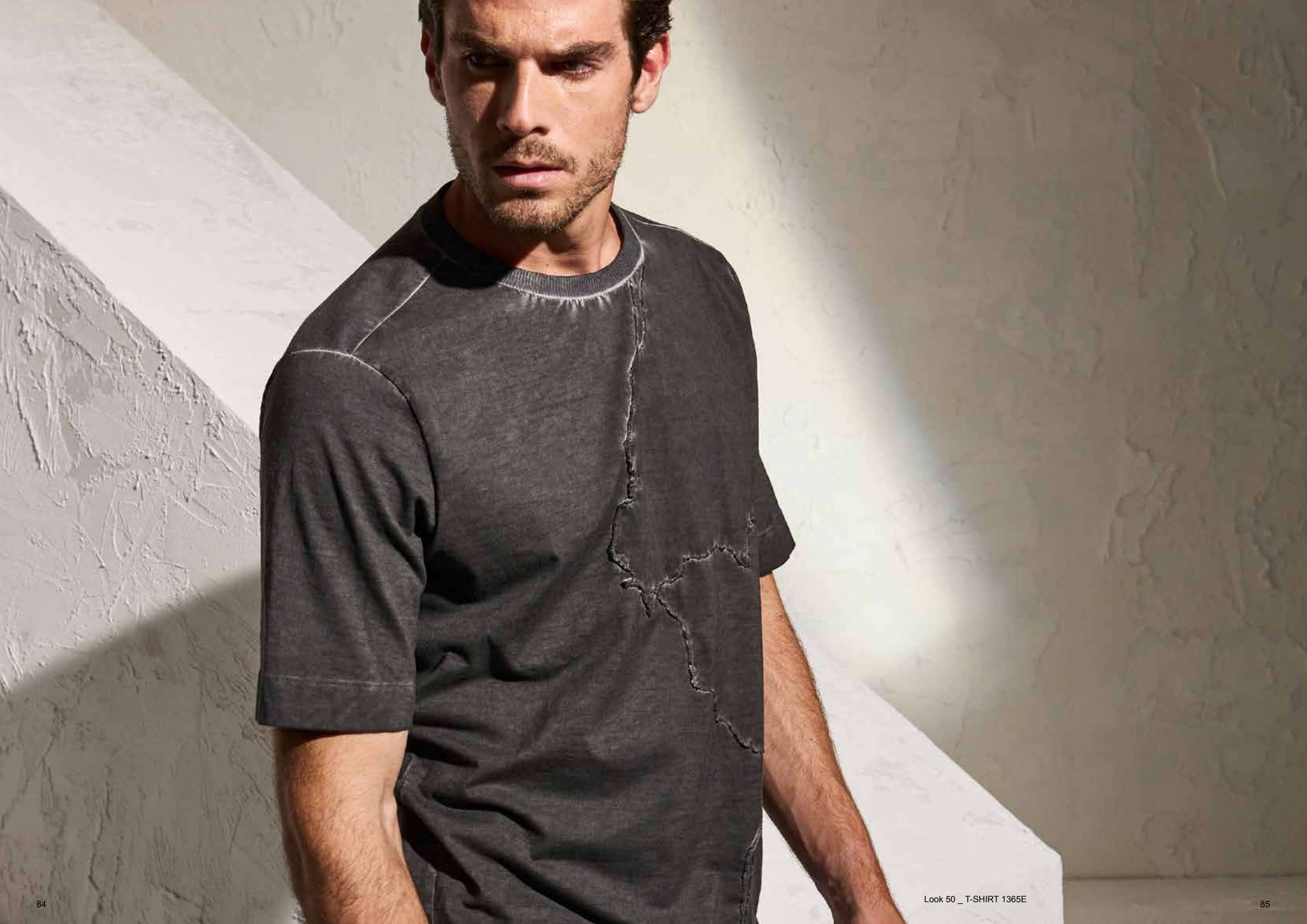
Look 48\_ T-SHIRT 1365\_ TROUSERS B115





Look 49\_ JACKET C125\_ T-SHIRT 1365E\_ TROUSERS C126







Look 51 \_ JUMPER 9445\_ TROUSERS B116





Look 52 \_ JACKET I186EC\_ T-SHIRT 1365E\_ TROUSERS I185EC



Look 53 \_ JACKET I186EC\_ T\_SHIRT 1365E





Look 54 \_ T-SHIRT 1366\_ TROUSERS K206





**TRANSIT**  
ACCESSORIES





Look 55 \_ BAG 4000E



Look 56 \_ BAG 4000EC



Look 58 \_ SCARF 5001



Look 59 \_ SCARF 5001EC



Look 57 \_ BEACH TOWEL 5000EC



Look 60 \_ HAT 5003E



Look 61 \_ HAT 5003EC

# TRANSIT

The image shows a close-up of a wall with a rough, textured surface, possibly made of plaster or concrete. The wall is divided into a grid of rectangular panels by faint lines. A shadow is cast across the lower right portion of the wall, suggesting a ledge or overhang. The overall color is a light, neutral tone.

**transit.it**

Tam & Company Spa  
+39 0445 314307